

# Direct Steam Kettle

2/3 Jacketed, Stationary  
Deep Drawn Construction  
Wall-Bracket Mounted  
Made in USA

# Model LTWT

## STANDARD FEATURES



- ◆ Kettle System
  - ◇ Seamless deep-drawn 304 kettle liner
  - ◇ 304 stainless draw-off tube and welds
  - ◇ 304 stainless 2" compression draw-off valve
- ◆ 304L seamless deep-drawn stainless kettle jacket
- ◆ 304 stainless support arms, seam welded to jacket
- ◆ 304 stainless, one piece, domed cover, actuator-assisted on 40 - 100 gallon
- ◆ 30 psi operating pressure
- ◆ Perforated disk strainer, 1/4" holes

### Model LTWT-40

with optional 3" draw-off & two piece hinged cover

Legion equipment is built to comply with applicable standards for manufacturers. Approval agencies may include ASME, NSF, UL, ETL, AGA, CSA, CGA, and others. Legion reserves the right of design improvement or modification as warranted.

## Models and Capacities

LTWT-10	10 gal.	38 l.
LTWT-20	20 gal.	76 l.
LTWT-30	30 gal.	114 l.
LTWT-40	40 gal.	151 l.
LTWT-60	60 gal.	227 l.
LTWT-80	80 gal.	303 l.
LTWT-100	100 gal.	379 l.

## Optional Features and Accessories

See price list for supplemental information regarding options

### Faucet Options:

\_ Single or double fill faucet with bracket & 12" or 18" swing nozzle

\_ 48" flexible spray hose assembly (vinyl or stainless) for use with dual or single fill faucet

\_ Faucet bracket

\_ Automatic water filling meter

(Call for information regarding additional faucet options)

### Prison/Security Options:

\_ Fastener (nut for draw-off)

\_ Draw-off nut driver tool

\_ Lockable lid

\_ Draw-off protection

\_ Reinforced bar rim

### Other Options:

\_ Higher operating pressure

\_ Air eliminator valve

\_ Pressure reducing valve

\_ Connection plumbing parts kit

\_ Mixer/Agitator, 2 speed

\_ Lift-off cover

\_ 1 piece actuator-assisted cover, 20 - 30 gallon

\_ 2 piece hinged cover

\_ In-wall carrier for wall mounting

### Accessories:

\_ Single basket insert, 20 - 40 gallon

\_ Tri-basket insert

\_ Nylon bag insert with spreader ring

\_ Draw-off drain hose

\_ Measuring strip

\_ Perforated disk strainer 1/8" holes

\_ Kettle care kit

Select draw-off valve:  2"  3"

With:  compression  ball type fitting

See price list for other draw-off options.

Revision 113

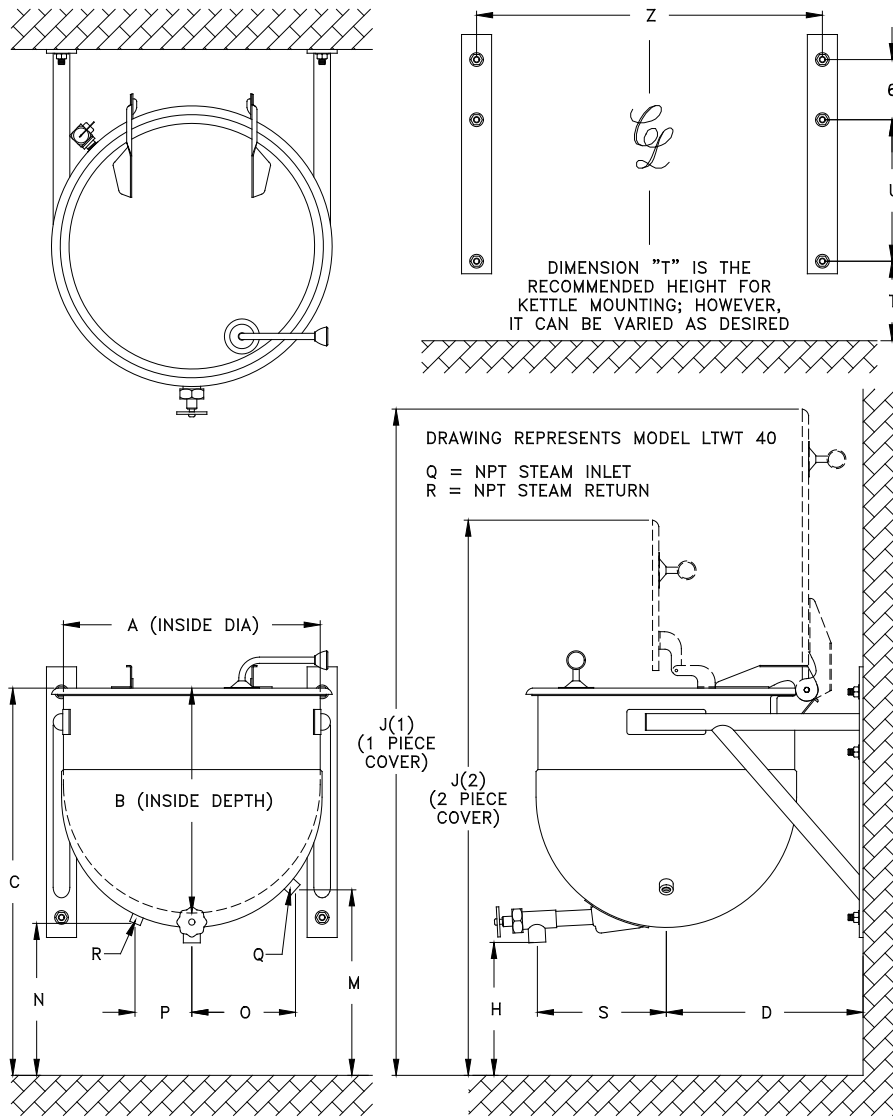


**LEGION** Legion Industries, Inc. P.O. Office Box 728 Waynesboro, GA 30830 (800) 887-1988  
(706) 554-4411 Fax: (706) 554-2035 www.legionindustries.com sales@legionindustries.com

# Model LTWT

2/3 Jacketed, Stationary  
Deep Drawn Construction  
Wall-Bracket Mounted  
Made in USA

# Direct Steam Kettle



MODEL LTWT DIMENSIONS

GAL.	A	B	C	D	H*	J1	J2	M	N	O	P	Q	R	S	T	U	Z
10	16.0	14.0	31.3	19.6	14.4	49.8	NA	16.3	14.7	5.6	3.0	.50	.50	10.1	9.0	16.5	16.5
20	22.0	16.0	31.0	19.6	13.5	56.0	46.2	16.7	14.7	7.9	3.0	.75	.50	13.0	8.2	16.5	22.5
30	23.0	20.3	35.6	19.6	13.9	61.6	51.8	17.3	15.0	8.3	3.0	.75	.50	13.0	12.9	16.5	23.5
40	25.5	22.3	36.8	24.6	13.0	65.3	54.8	17.4	14.2	9.7	3.0	.75	.50	13.0	14.0	16.5	26.0
60	29.5	25.0	39.8	24.6	13.3	72.3	63.3	17.6	14.7	10.5	3.0	.75	.50	14.0	12.0	21.5	30.0
80	32.5	27.6	42.7	24.6	13.6	78.2	67.5	17.6	15.2	10.7	3.0	1.0	.75	14.0	15.0	21.5	33.0
100	39.0	25.9	40.7	28.0	13.3	82.7	65.6	18.3	14.4	13.0	3.0	1.0	.75	17.8	13.0	21.5	39.5

\*"H" dimension varies with draw-off size selection.

Revised 113



**LEGION** Legion Industries, Inc. P.O. Office Box 728 Waynesboro, GA 30830 (800) 887-1988  
(706) 554-4411 Fax: (706) 554-2035 www.legionindustries.com sales@legionindustries.com