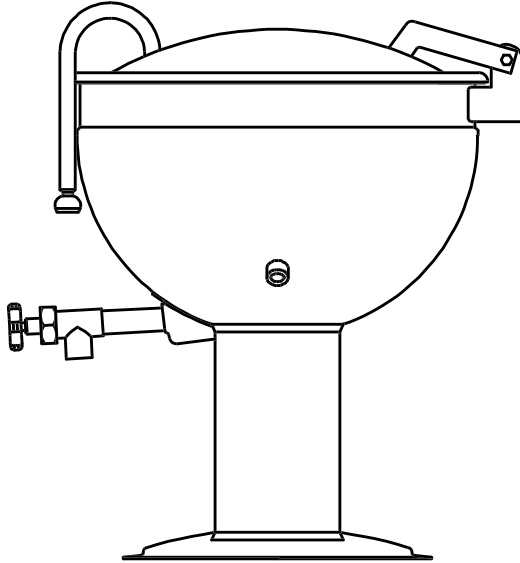


# DIRECT STEAM KETTLE

FULL JACKETED, STATIONARY  
PEDESTAL MOUNTED  
DEEP DRAWN CONSTRUCTION  
MADE IN USA

# MODEL LSP

## STANDARD FEATURES



Model LSP

- ◆ **The Legion 316 Kettle System**
  - ◇ 316 stainless liner
  - ◇ 316 stainless draw-off tube and welds
  - ◇ 316 stainless 1 1/2" compression draw-off valve
- ◆ 304 stainless kettle jacket
- ◆ 304 stainless pedestal tube
- ◆ 304 stainless pedestal base
- ◆ 304 stainless, one piece, domed cover, actuator-assisted on 40 - 100 gallon
- ◆ 30 psi operating pressure up to 80 gallon, 25 psi for 100 gallon
- ◆ Perforated disk strainer, 1/4" holes

Legion equipment is built to comply with applicable standards for manufacturers. Approval agencies may include ASME, NSF, UL, ETL, AGA, CSA, CGA, and others. Legion reserves the right of design improvement or modification as warranted.

MODELS AND CAPACITIES			OPTIONAL FEATURES AND ACCESSORIES	
			See price list for supplemental information regarding options	
LSP-20	20 gal.	(76 l.)	<input type="checkbox"/> Single or double fill faucet with bracket & 12 or 18" swing nozzle	<input type="checkbox"/> Connection plumbing parts kit
LSP-25	25 gal.	(95 l.)	<input type="checkbox"/> 48" flexible spray hose assembly (vinyl or stainless) for use with dual or single fill faucet	<input type="checkbox"/> Draw-off drain hose
LSP-40	40 gal.	(151 l.)	<input type="checkbox"/> Faucet bracket	<input type="checkbox"/> Measuring strip
LSP-50	50 gal.	(189 l.)	<input type="checkbox"/> Automatic water filling meter	<input type="checkbox"/> Perforated disk strainer 1/8" holes
LSP-60	60 gal.	(227 l.)	<i>(Call for information regarding additional faucet options)</i>	<input type="checkbox"/> Kettle care kit
LSP-80	80 gal.	(303 l.)	<input type="checkbox"/> Single basket insert, 20 - 40 gallon	<input type="checkbox"/> Mixer/Agitator, 2 speed
LSP-100	100 gal.	(379 l.)	<input type="checkbox"/> Tri-basket insert	
Select draw-off valve: <input type="checkbox"/> 1½" <input type="checkbox"/> 2" <input type="checkbox"/> 3" With: <input type="checkbox"/> compression <input type="checkbox"/> ball type fitting See price list for other draw-off options.			<input type="checkbox"/> Nylon bag insert with spreader ring	<b>Prison/Security Options:</b>
			<input type="checkbox"/> Lift-off cover	<input type="checkbox"/> Fastener ( <i>nut for draw-off</i> )
			<input type="checkbox"/> 1 piece actuator-assisted cover, 20 - 25 gallon	<input type="checkbox"/> Draw-off nut driver tool
			<input type="checkbox"/> 2 piece hinged cover	<input type="checkbox"/> Lockable lid
			<input type="checkbox"/> Higher operating pressure	<input type="checkbox"/> Draw-off protection
			<input type="checkbox"/> Air eliminator valve	<input type="checkbox"/> Reinforced bar rim
			<input type="checkbox"/> Pressure reducing valve	

Revision 999



**LEGION**® *The Finest American Quality Since 1897*

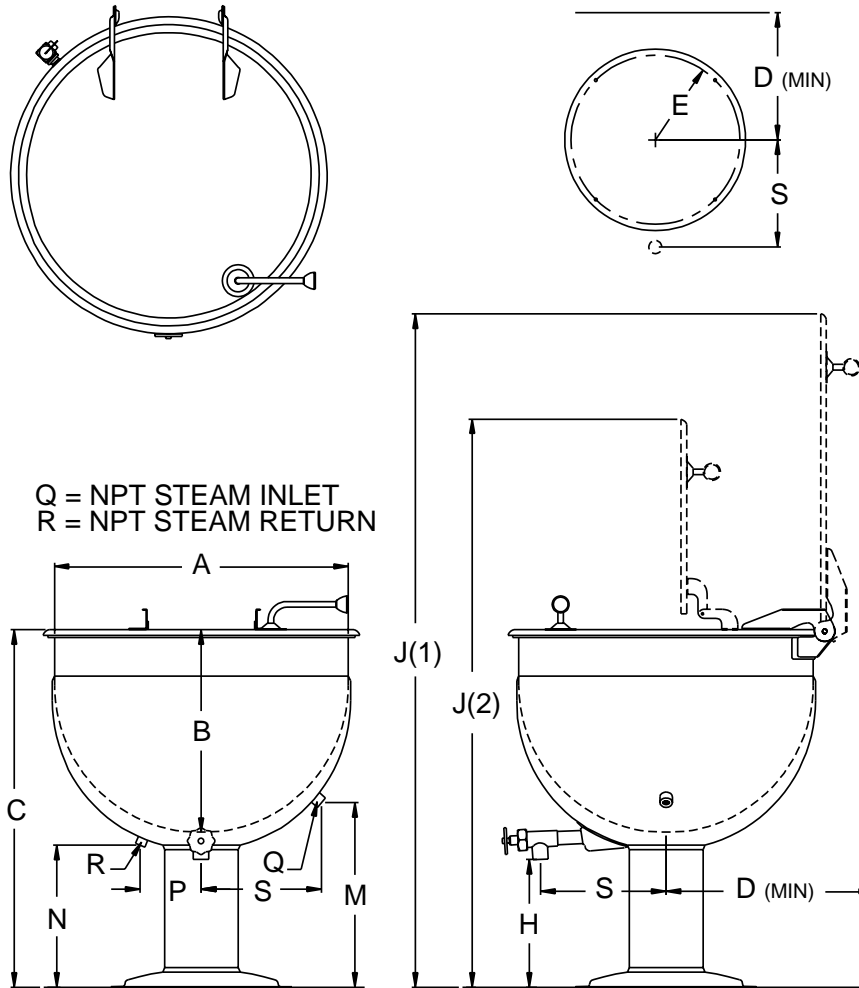
LEGION INDUSTRIES, INC. ◆ 69 MAIN ST. ◆ DALLAS, PA 18612 ◆ (800) 833-9803 ◆ (570) 675-1575 ◆ FAX: (570) 675-7551

**MODEL  
LSP**

FULL JACKETED, STATIONARY  
PEDESTAL MOUNTED  
DEEP DRAWN CONSTRUCTION  
MADE IN USA

**DIRECT STEAM  
KETTLE**

DRAWING REPRESENTS MODEL LSP-60



**MODEL LSP DIMENSIONS**

GAL.	A	B	C*	D	E	H*	J1*	J2*	M	N	O	P	Q	R	S*
20	23.0	15.0	31.4	20.5	7.8	13.9	57.4	47.5	17.8	15.0	8.8	5.0	.75	.50	13.0
25	25.5	15.5	30.0	21.8	9.3	13.0	58.5	48.0	16.4	14.0	8.7	6.0	.75	.50	13.0
40	29.5	19.0	35.3	23.8	9.3	13.3	67.8	58.8	17.3	14.5	10.2	6.0	.75	.50	14.0
50	29.5	21.8	36.3	23.8	9.3	13.3	68.8	61.0	17.3	14.5	10.2	6.0	1.00	.75	14.0
60	32.5	22.3	38.2	25.3	11.8	13.9	73.7	62.9	19.8	15.0	12.6	7.5	1.00	.75	14.0
80	39.0	22.0	37.5	28.5	11.8	13.4	79.5	62.3	19.6	14.9	14.3	10.0	1.00	.75	17.8
100	44.0	22.5	38.3	31.0	11.8	13.5	85.3	65.6	18.3	15.9	13.7	10.0	1.25	.75	19.7

\*Dimensions on these drawings are applicable only when using a 1.5" diameter draw-off valve. If a 2" or 3" diameter draw-off valve is required, contact Legion for applicable dimensions.

Revision 999



**LEGION** The Finest American Quality Since 1897

LEGION INDUSTRIES, INC. ♦ 69 MAIN ST. ♦ DALLAS, PA 18612 ♦ (800) 833-9803 ♦ (570) 675-1575 ♦ FAX: (570) 675-7551